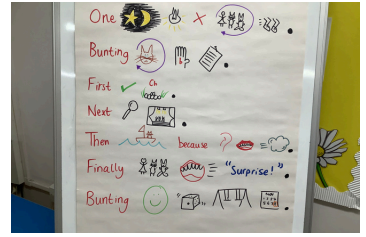


A MESSAGE FROM MRS FITCH AND MRS STACEY

Thank you so much for joining us for Parents' Consultations this week. It was wonderful to see so many families. We hope that you enjoyed the opportunity to speak with your child's classteacher about their learning and progress. We would just like to thank you so much for the positive interactions and feedback that you gave to staff during these two evenings. So many teachers spoke to us about your positive approach to these important conversations and the impact that this had on them. Thank you for taking the time to work in partnership with our teaching team: your children will certainly reap the rewards.

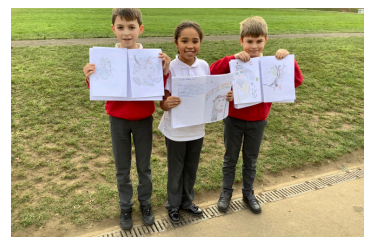


OUTDOOR PLAY AND LEARNING (OPAL) - As part of our ongoing OPAL project we recently took delivery of 100 tyres which you may have seen around the school site. A huge thank you to [Guildford Tyre Company Ltd](#) whose staff were truly amazing in supporting us - not only did they donate them for free but they also delivered them to us! The children are having great fun playing with the tyres and it is wonderful to watch the imaginative games they have already created.



WHAT WE HAVE BEEN UP TO THIS WEEK

YEAR 1 - The children have been busy creating a story map to retell the story of 'Lost in the Toy Museum' using actions and speaking from memory. They enjoyed working collaboratively using their Talk for Writing skills to retell the story. Please do have a look at your child's Seesaw account to share and see the story they created alongside their classteacher.



YEAR 3 - As part of geography the children have been learning all about volcanoes i.e., how they formed, the role of tectonic plates and how magma is formed. They have also begun their unit in PE on hockey, supported by staff and a coach from Guildford Hockey Club. Staff saw some fantastic 'Indian dribbling' and are looking forward to seeing the children progress over the coming weeks.



YEAR 5 - Over the past few weeks the children have been honing their descriptive skills in English. Last week the children worked on creating and describing their own god or goddesses linked to their topic on Ancient Greece. This week they have been creating god, goddesses or mythical beasts with negative characteristics. Staff have very much enjoyed reading and working alongside the children to learn all about their chosen characters. Please ask your child about theirs.

SOMETHING TO CELEBRATE:

Last weekend saw not 1 but 2 of our pupils being invited to carry their Beavers colony flag at the Remembrance Day parade and service at St John's Church, Merrow. Matthew and Rex, Year 3 were extremely honoured to have been asked to undertake this role.



Ever wondered who the voice is behind an advert? [Click here](#) to listen to Eliza, Y 4 who has been recording Barbie voiceovers for 'nick jr on demand' over the years. What a skill Eliza, to sync your words with the actions! We look forward to watching your next one which is shortly to be released.



THE WEEK AHEAD

Monday	
Tuesday	
Wednesday	3HU Class assembly Year 1 Haslemere Museum Trip CafeB - Uniform Shop
Thursday	
Friday	Uniform Shop BPTA meeting 9am (Buzz Room) Mufti in Exchange for a Merry Mug



TEAM BOXGROVE

Last Friday Mr Agombar and Mr Hughes took our year 6 football team to take part in the annual Guildford schools tournament. The boys played fantastically managing 1 win 2 draws and just the 1 defeat. The boys showed great team spirit and resilience all evening and should be very proud of their performance.



BPTA

IT'S ONLY 2 WEEKS UNTIL THE BOXGROVE CHRISTMAS FAIR! We look forward to sharing this special event with you on Saturday, 30 November 2024.



Key dates leading up to the fair:

Friday, 22 November 2024 - Mufti in exchange for a merry mug. (See pic below to see a merry mug example)

Friday, 29 November 2024 - Mufti in exchange for a bottle or chocolate for the Tombola

Friday, 29/ Saturday, 30 November 2024 - Donation of cakes for the refreshment stall either the day before or day of the fair.

We are still collecting Christmas jumpers, fancy dress and soft toys right up until the day of the fair. Please leave any donations outside the School Office - there's a sign and big box.

Lastly, a big thank you to everyone who has volunteered to help on the day! If you haven't volunteered yet and are available, please reach out to your class rep - we still have several stalls that could use extra support.

BPTA Christmas Cards and Gifts - GOOD NEWS! The Christmas card and gift shop will re-open on Friday, 15 November 2024 for one week, giving you the chance to make any last-minute purchases. All items will be delivered in early December. If you have any questions, please feel free to email us at bpta.cards@gmail.com.

Your Next PTA Meeting - Your next PTA meeting will take place on the **Friday, 22 November 2024**, in the Buzz Room at **9:00am**. All are welcome so please come along! There are many ways for you to make a meaningful contribution to the school community, whether through volunteering, sharing your expertise, or simply attending meetings. By working together, parents and teachers can create a supportive and enriching school experience for all students. Please email boxgrovepta@gmail.com if you would like to know more.

BPTA Event Dates for Your Diary!

30 November 2024 - Christmas Fair

21 & 22 January 2025 - School Disco

7 February 2025 - Painting & Prosecco

3 & 4 March 2025 - Sponsored Pancake Flip

22 March 2025 - Quiz Night

21 June 2025 - Summer Fair

11 July 2025 - Summer Family BBQ



PTA Events - Register Now! - We use the PTA Events website throughout the year to simplify ticketing and payments for our events, auctions, and raffles. To purchase tickets, merchandise, or even make a donation to the PTA, you'll need to create an account. Simply visit www.pta-events.co.uk/bpta and click on "Register" to get started.

BOXGROVE PTA – "DOING MORE TOGETHER"

E: boxgrovepta@gmail.com F: [facebook.com/boxgrovepta](https://www.facebook.com/boxgrovepta) W: www.boxgrove.surrey.sch.uk/bpta/



COMMUNITY

BOXGROVE COMMUNITY TEA PARTY - TUESDAY, 10 DECEMBER 2024.

Can you help us share our invites?

If you have a senior neighbour or family member who would enjoy an afternoon tea, whilst being entertained by some of our pupils on **Tuesday, 10 December 2024**, please let us know by [CLICKING HERE](#). Simply add their name(s) and address to the form and we will send them an invite, alternatively paper invites can also be collected from the School Office. Please remind your guest(s) to let us know they are coming to help us plan our catering as well as if they need transport.

LEARNING PARTNERS ACADEMY TRUST CHRISTMAS CARD COMPETITION -

Supermarkets are now selling their festive sandwiches which means it is time for the Trust to kick off their annual Christmas card competition! Remember, there is a prize for the best design in each category. Designs can be in pencil, felt tip, photographs, painted or multimedia. Please hand your completed design to your classteacher and make sure to include your first name and surname on the back, along with your class. Closing date for entries is **Friday, 22 November 2024**.



Boxgrove Primary School

The children and staff invite you to join them at their annual **COMMUNITY CHRISTMAS AFTERNOON TEA PARTY**

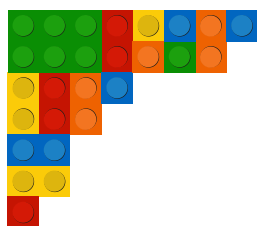
10 DECEMBER 2024 1:30PM - 2:45PM

We look forward to sharing an afternoon full of fun to get everyone in the spirit for Christmas. Our afternoon party promises festive decorations, delicious treats, and holiday spirit.

Transport can be arranged if required. Simply let us know when replying.

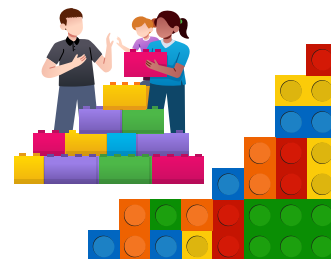
RSVP: (01483) 563701
or email office@boxgrove.surrey.sch.uk
or scan the QR code

Boxgrove Lane, Guildford, Surrey GU1 2ED



BURPHAM CHURCH, New Inn Lane, Guildford - 'LEGO CHURCH' - New dates published. Burpham Church stay and play Lego extravaganza. Families are invited to play with over 100,000 blocks, share refreshments, build story ideas and meet new friends. FREE to all. Why not join them.

Sunday, 17 November 2024 3:00pm - 4:30pm
Sunday, 1 December 2024, 3:00pm - 4:30pm



JUDO CLUB - Booking for next term are now open.

Start date: 9 January 2025

End date: 3 April 2025

Half Term: 20 February 2025

Total of 12 weeks. For more information please see the flyer to the right.



BOXGROVE SCHOOL JUDO CLUB

Part of the Award Winning, Witley, Aids Family

Witley Judo Club, British Judo, Witley Schools Judo

Boxgrove School, Guildford, Surrey

For more information please see the flyer to the right.



10 Top Tips for Parents and Educators TEACHING CYCLE SAFETY

1. CONSIDER CYCLE TRAINING
2. USE A SUITABLE BIKE
3. CHECK AND BELL
4. INSPECT YOUR CYCLE
5. BEING SUITABLE GEAR
6. STICK TO FLAT TERRAIN
7. STAY ALERT AND IN SAFE FORMATION
8. AVOID PARKED CARS
9. CHECK A SILENT
10. MAKE SURE!

Witley Judo Club, British Judo, Witley Schools Judo

SWIMMING UPDATE AND PARENTS' SWIM CONSULTATIONS

SWIMMING - It's great to be back in the pool after half term. We have been challenging ourselves to do new things. Reception children did well at swimming and floating on their backs this week. Year 1 are working hard to try and swim the width without stopping. Year 2 have been swimming in the deep end. Year 3 and 4 have been working on swimming neatly to improve their strokes. Year 5 and 6 have been swimming longer distances to build stamina.

Parent consultations with Swim Teachers are being held on **Tuesday, 3 December 2024** (Mrs Tait and Mrs Gurney) and **Wednesday, 4 December 2024** (Mrs Gurney and Mrs Illingworth) between 3:40pm and 5:10pm. Bookings open on [School Cloud](#) next week, **Monday, 17 November 2024** at 4:00pm and close **Friday, 22 November 2024** at 12:00 noon. Please only book 1 appointment per family. If your child attends Swim Squad and you have any queries, please chat to the Swim Teachers at the end of training sessions if possible rather than book a slot.

The following Year groups are covered by the following teachers:

Year 1 - Mrs Illingworth and Mrs Tait

Year 2 - Mrs Tait and Mrs Gurney

Year 3 - Mrs Gurney and Mrs Tait

Year 4 - Mrs Illingworth and Mrs Gurney

Year 5 - Mrs Tait and Mrs Gurney

Year 6 - Mrs Illingworth and Mrs Tait



YEAR GROUP INFORMATION

Below you will find all the latest events, information and letters from each year group for this week:

- All the letters are available on our school's website www.boxgrove.surrey.sch.uk
- The links highlighted below will take you straight to the location where you can view, download and print the letters that are relevant to your child's year group
- Please be advised that all letters are available under the Parent tab, Parent Hub in the event you are unable to open the link.

Year group Activity / news /trips

Reception	Our plans for the week - click here	
Year 1	Our plans for the week - click here	
Year 2	Our plans for the week - click here	
Year 3	Our plans for the week - click here	
Year 4	Our plans for the week - click here	
Year 5	Our plans for the week - click here	
Year 6	Our plans for the week - click here	
Whole School	<p>LOST PROPERTY Please have a look at the picture on the right for lost unnamed items. Can we remind Parents/ Carers to label items clearly as we are unable to return items to children if they are not named.</p>  <p>LOST SCOOTER - Have you accidently taken home the wrong scooter? One of our families has lost their scooter which was left in the scooter park near the School Office (picture to the right). If so, please could you pop it into the School Office so we can reunite it with its owner. Thank you.</p> 	  



DATES FOR YOUR DIARY

IF DATES ARE IN **RED** THEY ARE NEW DATES. IF DATES ARE IN **BLUE** THEY ARE AMENDED DATES.

DATES FOR YOUR DIARY - ACADEMIC YEAR 2024 - 2025

20 November	3HU Class assembly - 9am in the Kent hall
20 November	Year 1 Haslemere Museum Trip
22 November	BPTA meeting 9am (Buzz Room)
22 November	Mufti in Exchange for a Merry Mug
25 November	Year 3 Natural History Museum Virtual Workshop
28 November	4W Class assembly - 9am in the Kent Hall
27 November	Years 5 & 6 Rocksteady Concert - Rocksteady to notify Parents
29 November	Year 4 Roman Day (NO DRESS UP REQUIRED)
29 November	BPTA mufti day in exchange for bottle or box or chocolates
29 November	Years 3 & 4 Rocksteady Concert - Rocksteady to notify parents
30 November	BPTA Christmas Fair
3 December	Year 4 Strings Christmas Concert (Details to follow)
3 December	Reception Christmas Play - 9:15am
4 December	Christmas Lunch (Deadline to book on lpay is 27 November)
4 Decemeber	Year 1 Christmas Play - 2pm
4 December	Year 2 Christmas Play - 9:15am
5 December	Year 1 Christmas Play - 2pm
5 December	Reception Christmas Play - 9:15am
5 December	Year 2 and 3 The Travelling Crib - (More details to follow)
6 December	Year 1 Christmas Play - 9:15am



DATES FOR YOUR DIARY

IF DATES ARE IN **RED** THEY ARE NEW DATES. IF DATES ARE IN **BLUE** THEY ARE AMENDED DATES.

DATES FOR YOUR DIARY - ACADEMIC YEAR 2024 - 2025	
6 December	Year 2 Christmas Play - 2pm
9 December	Reception health screening and NCMP
10 December	Year 5 and Year 6 Orchestra Christmas Concert
11 December	KS2 Christmas Service (Details to follow)
12 December	KS2 Christmas Service (Details to follow)
20 December	School closes at 1.10pm for Christmas holidays
6 January	School re-opens for children
15 January	2T Class assembly - 9am in the Kent Hall
21 - 22 January	PTA School Disco
22 January	5M Class assembly - 9am in the Kent Hall
27, 28 & 30 January	Year 3 Feet First Road Safety Training
5 February	6K Class assembly - 9am in the Kent Hall
7 February	BPTA Painting and Prosecco
12 February	1B Class assembly - 9am in the Kent Hall
17 Feb - 21 Feb	Half term
4 March	Sponsored Pancake Flip
10 - 17 March	Year 4 - Level 1 Bikeability
12 March	2W Class assembly - 9am in the Kent Hall
20 March	4CH Class assembly - 9am in the Kent Hall
22 March	Quiz Night



DATES FOR YOUR DIARY

DATES FOR YOUR DIARY - ACADEMIC YEAR 2024 - 2025	
26 March	5CB Class assembly - 9am in the Kent Hall
2 April	6H Class assembly - 9am in the Kent Hall
4 April	School closes at 1.10pm for Easter Holidays
22 April	School re-opens for children
23 - 25 April	Year 4 Henley Fort Residential
30 April	5E Class assembly - 9am in the Kent Hall
7 May	3L Class assembly - 9am in the Kent Hall
12 - 16 May	Year 5 Ironbridge Residential
12 - 15 May	Year 6 End of Key Stage 2 SATs week
14 May	1LP Class assembly - 9am in the Kent Hall
26 May - 30 May	Half Term
2 June	School re-opens for children
5 June	4A Class assembly - 9am in the Kent Hall
11 June	2S Class assembly - 9am in the Kent Hall
10 - 13 June	Year 6 Ross-on-Wye Residential
18 June	1S Class assembly - 9am in the Kent Hall
21 June	BPTS Summer fair



DATES FOR YOUR DIARY

DATES FOR YOUR DIARY - ACADEMIC YEAR 2024 - 2025	
25 June	6W Class assembly - 9am in the Kent Hall
2 July	3A Class assembly -9am in the Kent Hall
11 July	BPTA Family BBQ
16 July	Meet the teacher 3:30pm - 5pm
18 July	School closes at 1:10pm for Summer Holidays
21 - 22 July	Inset days